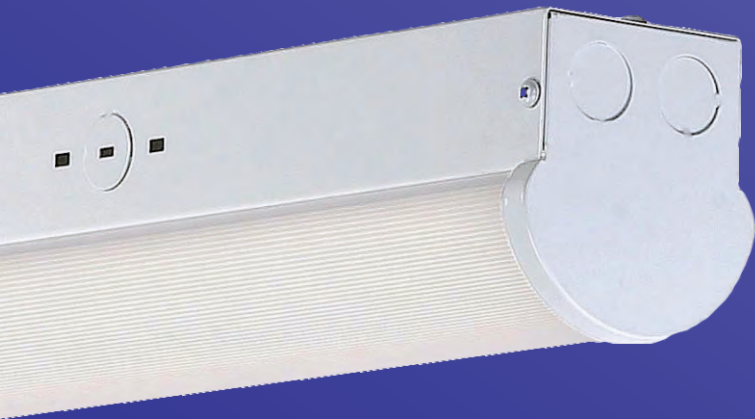


LT-LSA series

LED STRIP & LOW BAY LIGHT



EXCELLENT CONSTRUCTION & MATERIALS

- ↘ Frosty or clear strip cover
- ↘ White finish
- ↘ Metal housing
- ↘ Stainless steel clips
- ↘ Standard 0-10VDC dimming
- ↘ Motion sensor available
- ↘ L70 > 50,000 hrs

MANY INSTALLATION MOUNTING

- ↘ Chain Pendant/Surface mounted

CERTIFIED GUARANTEE

- ↘ UL/cUL listed, DLC qualified
- ↘ CE/RoHs

ELECTRICAL SYSTEM

- ↘ Widely Input voltage: 100-277VAC
- ↘ Power from 30W, 40W for 4' length
60W for 8' length

MANY OPTICAL SYSTEM OPTION

- ↘ Beam angle: 120°
- ↘ 130-150 lumen per watt

LONG WARRANTY

5 Years

LIGHTIDE

LT-LSA SERIES LED STRIP & LOW BAY LIGHT

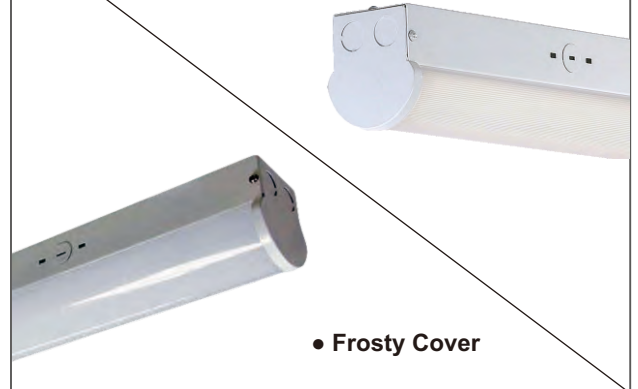
LED Strip Light feature IK08 and 5VA rated shatter-proof polycarbonate housing, which coming with frosty or clear strip cover for option. High lumen output level up to 150 LPW of led light fixtures is DLC qualified and offer 5 years warranty. It usually is installed for storage areas, warehouses, shops and garages etc for current fluorescent tube fixture replacement.

Performance

Output Efficacy: 130-150 lumen/watt
Input Power: 30W/40W/60W
CRI: 80
CCT: 3000K, 4000K, 5000K, 6000K, 6500K
Finish: White
Input Voltage: 100-277vac
Warranty: 5 years
Mounting: Surface mount, Chain pendent
Weight: 2.0 Kg
Dimmable: Standard 0-10VDC dim
Certificate : UL/cUL certified, CE & RoHs
 DLC qualified

Cover Option

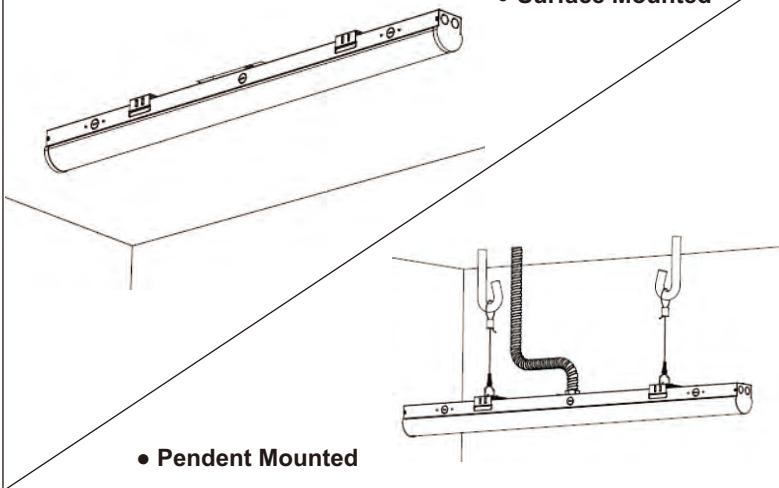
• Clear Strip Cover



• Frosty Cover

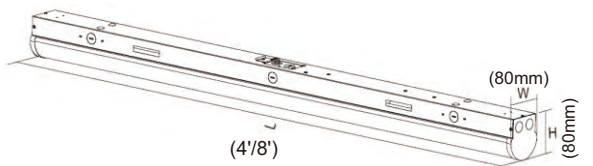
Installation

• Surface Mounted



• Pendent Mounted

Dimension



Order Information

Sample Number: LT-LSA04-40W-27K-MS-F

| Com. | Family Name | Length | Wattage | CCT | Voltage | Control Mode | Bracket | Cover |
|----------|------------------------------|--------|------------------|--------------------------------------|------------------|---|---|----------------------|
| LT | LSA | 04=4FT | 30=30W 40=40W | 27K=27000K 30K=3000K 40K=4000K | Blank=100-277VAC | Blank=Standard 1-10VDC dimming MS=Motion Sensor | Blank=Surface mount kit included PM= Pendent kit | F=Frosty C= Clear |
| Lightide | LED Strip Light A Type | 08=8FT | 60=60W | 50K=5000K 60K=6000K 65K=6500K | | | | |

MORE QUALIFIED PRODUCTS, PLEASE CONTACT

<https://www.lightideled.com>
 Lightide Manufactory Co., Ltd All right reserved.

