

LED VAPOR-PROOF LIGHT-TPC series

DESCRIPTION

TPC series LED Vapor-proof Light is made of aluminum housing. High lumen LED light source for any application requiring maximum performance and minimum maintenance. The different length 2', 4' and 5' design and sealed compartment combine to make LED light virtually impenetrable to contaminants. LED light fixture can operate 120-277V and UL listed /DLC QPL for energy rebate. It is widely used for warehouse, parking lot lighting, stairwell lighting and other lighting applications.

CONSTRUCTION & MATERIALS

- Mitsubishi Polycarbonate cover and Aluminum housing
- Translucent white or frosted diffuser included
- IP 66 waterproof, dust-prff, damp-proof and vapor-proof
- Ik10
- Emergency battery pack for emergency
- 1-10V dimming, DALI, motion sensor available
- Aluminum circuit board
- L80 B50 lifespan: 75,000 hrs

MOUNTING

- Surface Mount or suspended mounted directly

FINISH

- Silver

ENVIRONMENTAL SYSTEM

- UL approved for outdoor wet/damp locations

ELECTRICAL SYSTEM

- Integral high performance LED driver
- Input voltage 100-240V/277VAC, 50/60Hz

OPTICAL SYSTEM

- 120° beam angle lens for option.
- SMD2835 LEDs up to 150 lm/w output.

LIGHTING CONTROL

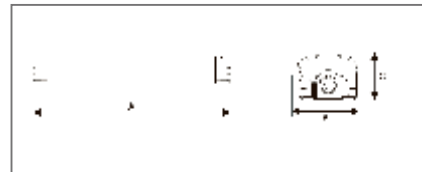
- Motion sensor
- Emergency battery kits
- Available for special order, consult factory for lead time

WARRANTY

5 Years



DIMENSION



DATA SHEET

Model#	Voltage	Size (AXBXC)	Watt	SDCM	CRI	CCT	Lumen Output
LT-TPC230	100-277vac	600x90X70 mm	30W				
LT-TPC440	100-277vac	1200x90X70 mm	40W	<4	>80	3000K,4000K, 5000K, 6000K	110-120 LPW 140-150 LPW
LT-TPC460	100-277vac	1200x90X70 mm	60W				
LT-TPC560	100-277vac	1500x90X70 mm	60W				

ORDER INFORMATION

Sample Number: LT-TPC440-50K-HV-DM-C

Com.	Family Name	Size	Power	CCT	Driver	Control Mode	Mount	Diffuser
LT	TPC	2=2ft	30=30W	30K=3000K	Blank=100-277VAC	DM=0-10VDC Dim	Blank=Surface	Blank=Frost
lightid	Vapor	4=4ft	40=40W	40K=4000K	HV= 200-480VAC	MS= Motion sensor	mount	C=Clear
	Tight	5=5ft	60=60W	50K=5000K		DA=DALI DIM	P=Suspended mount	
				60K=6000K		BK= Battery Kit		

LED VAPOR-PROOF LIGHT-TPC series

PACKAGE INFORMATION

NO.	Model#	Carton Size (LXWXH)	N. W. / CTN	G. W. / CTN	QTY/CTN (PCS)	20' GP Loading	40' GP Loading
1	LT-TPC230	69x25x26 cm	9 Kg	11 Kg	6	629 CTN	1286 CTN
2	LT-TPC440	129x25x26 cm	15 Kg	18 Kg	6	304 CTN	708CTN

COMPONENT KITS OPTION

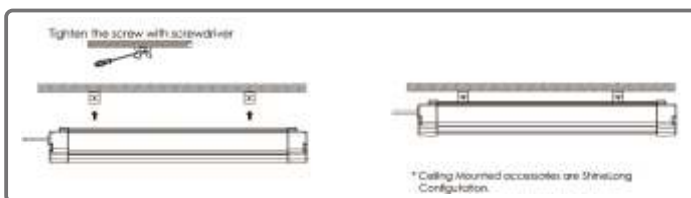


EMERGENCY WORK MODE

Model#	Emergency Time (hrs)	Emergency Power	Battery
LT-TPC230	3	4W	7.2V 2.2AH
LT-TPC440	3	4W	7.2V 2.2AH

INSTALLATION

I. Surface Mounted Installation



II. Suspended Mounted Installation

