



LBA Series

Food Grade UFO LED High Bays



LBA Series

Food Grade UFO LED High Bays



UFO high bay led light fixtures are IP69K and NSF Certified. It is suitable for industrial, retail, and commercial interiors. High-protection rating of luminaires allows to clean with high pressure up to 100 bar and 80 degrees C hot water, and a variety of cleaning agents, alongside good chemical resistance.

DESCRIPTION

UFO LED High Bay Light features high lumen efficacy of 160~210 LPW for any application requiring maximum performance and minimum maintenance. The IP69K-rated provides protection against ingress of dust and high temperature, high pressure water to make LED light virtually impenetrable to contaminants. NSF certified products have therefore passed a stringent set of evaluations to ensure food safety requirements and standards are met for food processing warehouse, plant lighting, supermarket, mail and other lighting applications.

CONSTRUCTION & MATERIALS

- ◆ Die-casting aluminum alloy housing, fully sealed to be dirt and bug proof
- ◆ Impact-proof PC cover /Glass cover optional
- ◆ IP 65 rating waterproof protection
- ◆ Std. White polyester powder-coated finish.
- ◆ Anti-corrosion
- ◆ IP69K-rated luminaires allow to clean with high pressure up to 100 bar and 80 degrees C hot water

MOUNTING AND WIRING

- ◆ Chain mount/Conduit mount
- ◆ Safety Chain Protection

ENVIRONMENTAL SYSTEM

- ◆ Indoor/Outdoor wet/damp location
- ◆ Surge Protection: > 4KV

WARRANTY

- ◆ 5 Years

LIFESPAN

- ◆ 100000 hours LED lifespan based on IES LM-80 results and TM-21 Calculation

ELECTRICAL SYSTEM

- ◆ Input voltage 100-277 VAC
- ◆ ETL/cETL, SAA, CE/RoHS.
- ◆ NSF

OPTICAL SYSTEM

- ◆ 160~210 lm/w output efficacy
- ◆ Color temperature: 3000K, 4000K, 5000K and 5700K.
- ◆ CCT Selectable 30K-40K-50K available
- ◆ 60°/90°/120° beam angle

LIGHTING CONTROL

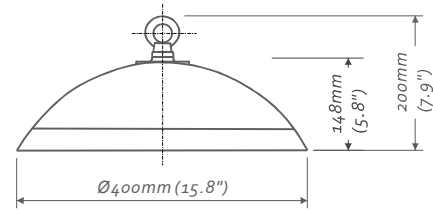
- ◆ 0-10vdc dimming available
- ◆ Bi-level Microwave motion sensor available
- ◆ Wattage selectable

STANDARD

- ◆ EN61347-1, EN61347-2-13, EN60598-2-1, EN60598-1
- ◆ UL 1598, CAN/CSA -C.22.2 NO. 250.0,
- ◆ UL 924, CSA C22.2 NO.141



DIMENSION



DATASHEET

MODEL#	LT-LBA100	LT-LBA150-CPT	LT-LBA150	LT-LBA200
RATED POWER	100W	100W-120W-150W Selectable	150W	200W
OUTPUT EFFICACY	160~210 LPW	160~210 LPW	160~210 LPW	160~210 LPW
PF	>0.9	>0.9	>0.9	>0.9
THD	<20%	<20%	<20%	<20%
CRI	>80 Ra	>80 Ra	>80 Ra	>80 Ra
RATED	IP65 & IP69K	IP65 & IP69K	IP65 & IP69K	IP65 & IP69K
BEAM ANGLE	60° / 90° /120°	60° / 90° /120°	60° / 90° /120°	60° / 90° /120°
CCT	2700K~6500K	30K/40K/50K Selectable	2700K~6500K	2700K~6500K
MATERIAL	Die-casting Aluminum	Die-casting Aluminum	Die-casting Aluminum	Die-casting Aluminum
L70 LIFE (τTA=30°C)	>50,000hrs	>50,000hrs	>50,000hrs	>50,000hrs
WORK TEMP.	-40°C~45°C	-40°C~45°C	-40°C~45°C	-40°C~45°C

ORDER INFORMATION

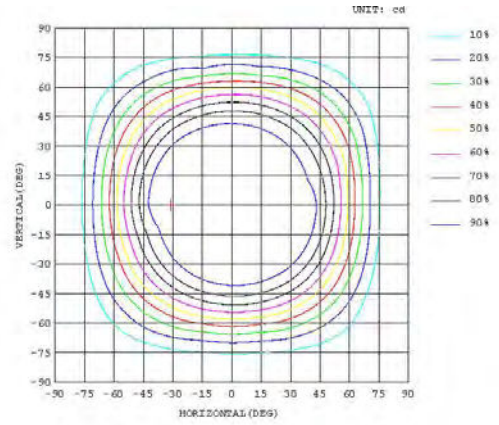
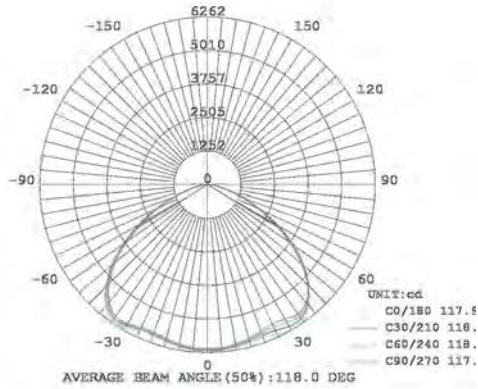
Sample Number: LT-LBA150CP-30K-EM-90D-BK

COM.	SERIES	VOLTAGE	WATTAGE	CCT	CONTROL MODE	BEAM ANGLE	FINISH
LT	LBA	Blank 100-277VAC H 200-480VAC	100 100W 150CP 100W-120W-150W Tunable 150 150W 200 200W 200CP 100W-150W-200W Tunable	30K 3000K 40K 4000K 50K 5000K 57K 5700K T 3000K-4000K-5000K Selectable	DM 0-10VDC Dim DA DALI Dim PS PIR Sensor MS Motion sensor EM Emergency Pack	Blank 120° 60D 60° 90D 90°	Blank White BK Black

PHOTOMETRICS

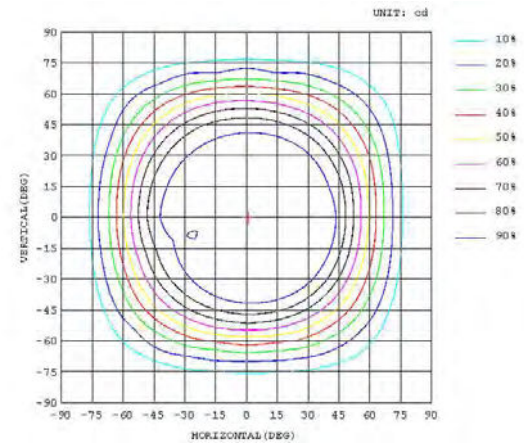
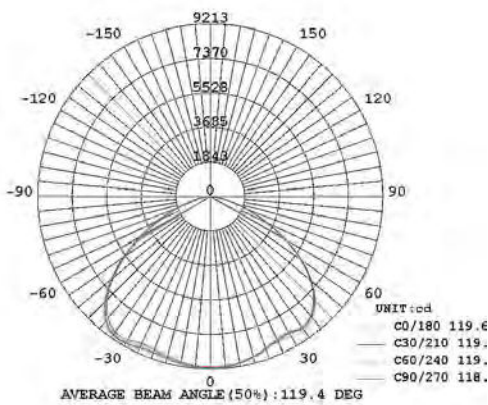
LT-LBA100-50K

100W
100-277VAC
5000K
19,165 LUMENS



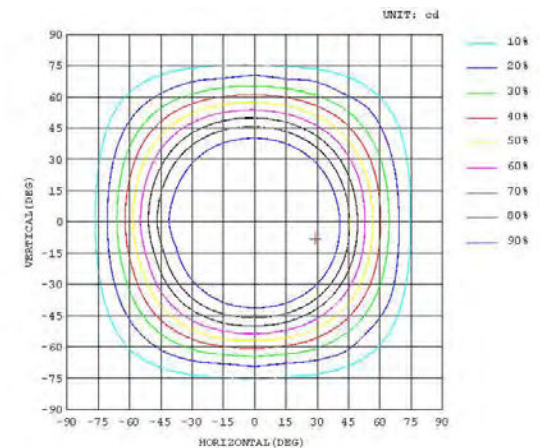
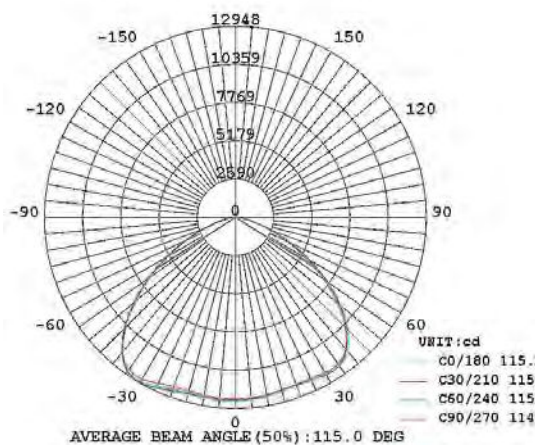
LT-LBA150-50K

148.90 W
100-277VAC
5000K
28,539 LUMENS



LT-LBA200-50K

200W
100-277VAC
5000K
38,343 LUMENS



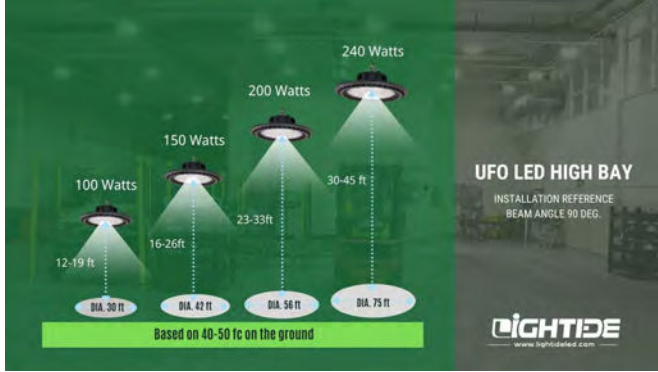
LBA

Food Grade UFO LED High Bays

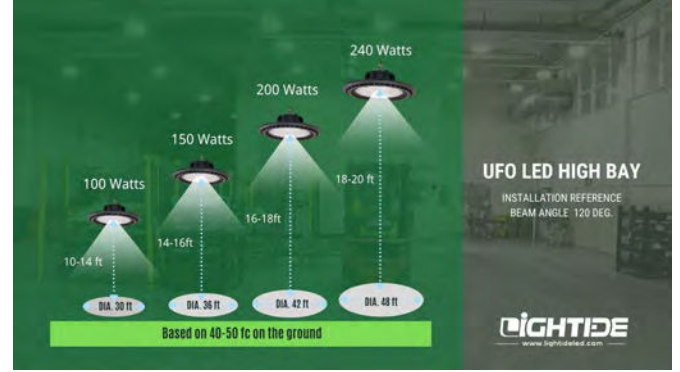
IP 65 & IP69K | 160~210 LPW | NSF APPROVAL

INSTALLATION

Catalog#	Type
Comment	
Project	Date



90 DEG BEAM ANGLE INSTALLATION REFERENCE



120 DEG BEAM ANGLE INSTALLATION REFERENCE

PACKAGE INFORMATION

NO.	MODEL#	CARTON SIZE (LXWXH)	G. W. / CTN	QTY/CTN	40' 6P
1	LT-LBA100	49X49X24 CM	5.3 Kg (11.8 LBS)	1 PC	1432 PCS
2	LT-LBA150	49X49X24 CM	5.4 Kg (12 LBS)	1PC	1432 PCS
3	LT-LBA200	49X49X24 CM	5.5 Kg (12.2 LBS)	1PC	1432 PCS

OPTIONAL ACCESSORIES



CPT
CCT & Wattage
Selectable



MS
Motion Sensor w/Dimming & ON/OFF

MS1
Motion Sensor w/ON-OFF



EM
Emergency Backup
(Field-Assembly)



60° Clear Reflector