

LIGHTTIDE

OEM LED LIGHTING SOLUTION

Date: July. 18, 2020

OUTLINE

Problem
Welcome to Lightide
Solution
Product / Outdoor Solution
Product / Indoor Solution
Product / Emergency Solution
OEM/ODM
Partner
Facility
Certificate
Contac Us

PROBLEM

HIGH ENERGY COST

Energy savings is a primary driver behind why you should evaluate lighting for your building or facility. Common wattages for HID fixtures range from 175 watts to 1000 watts.



SHORT LIFETIME

When looking at incandescent, fluorescent, and HPS's that are equivalent in terms of the amount of light they produce, An incandescent will last about 1,000 hours only. Fluorescents will last around 8,000. HPS's, on the other hand, will last 15,000 hours



SHORT-TERM WARRANTY

Metal halide lamps do not have a long lifespan and have a very quick rate of lumen depreciation. They have to be replaced every now and then. When used in large commercial applications, they have to be replaced in groups as changing out single bulbs can be very expensive..



Welcome to Lightide

The Lightide brand has proudly stood for lighting innovation and genuine customer satisfaction for over ten years. Since 1999, Lightide Manufactory Co., Ltd. focuses on the led solutions to help our customers to extend the mark

All the products undergo rigorous quality and safety testing, to ensure we are offering the best products. For instance, all meet appropriate certifications, cULus/CE, and DLC, to the market at all times.

All the commercial lighting products meet the highest standards for your safety only. In addition, all the products are backed by our 5-10 years policy! Above all, our friendly customer service will be more than happy to help you!

Innovation, Trust, and Value is our company mission. That is Lightide.



SOLUTION

PREMIUM LED CHIP

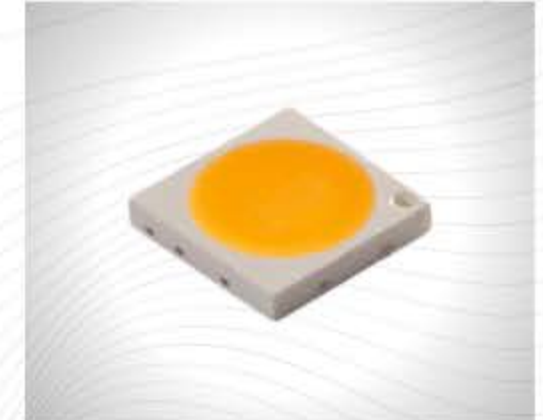
We usually use CREE, Philips, Osram LED chip for lighting. They have extremely long lifespans (50,000 to 100,000 hours or more), very high energy efficiency, extremely high light quality and little to no maintenance costs.

UL/CE CERTIFIED LED DRIVER

Meanwell and Sosen led driver are options. They can provide long-term 5-10 years warranty.

UNIQUE DESIGN

LEDs can be designed into systems that can produce amazing lighting effects for the eye, the mood, and the mind. They are designed to deliver light in a more efficient way. The mechanics of the lighting are much better than other traditional lamps.



OUTDOOR SOLUTION



LED WALL PACKS

Full-Cutoff, Half-Cutoff,
Mini Style

LED Wall packs or wall mounted lights are installed by the side of a building. They help to light the building's exterior or the parking space in the area.



LED AREA LIGHTS

LED Parking Lot, Post Top
LED Light

LED area lights are mounted on a pole to serve as a parking lot light or street light. There is usually a single mounting option even though there are avenues to order for alternatives.



LED FLOOD LIGHTS

LED Security Light,
Stadium light

LED flood lights aim to provide high-intensity light in a wide area and may be used to draw attention to monuments, pathways, stadium, or beautiful landscapes.

INDOOR SOLUTION



LED CANOPY LIGHTS

Surface-Mount, Recessed-Mount

Designed for outdoor use in a variety of commercial and professional settings, such as bus depots, gas stations, and more, these traditional LED canopy lights offer reliable performance in all sorts of weather.

LED HIGH BAYS

Linear style, UFO style, Shop Light

LED high bays are a top choice for large indoor areas when it comes to commercial LED lighting. Depending on your space, a linear or round fixture could work better.

LED VAPOR TIGHTS

Vapor-tight, tri-proof

Specially designed to handle tough environments while providing exceptional illumination, vapor tight light fixtures are ideal for both indoor and outdoor applications.

EMERGENCY SOLUTION

An Emergency Light is a light fixture that illuminates key safety areas when a building experiences power loss. A unit with Battery Backup capability switches to Emergency Operation in these power losses to illuminate escape routes and safety equipment. These products are UL924 listed and come with a 5 year warranty.

INDUSTRIAL SOLUTION

UFO, Linear High Bay



CANOPY SOLUTION

Gas station, parking garage

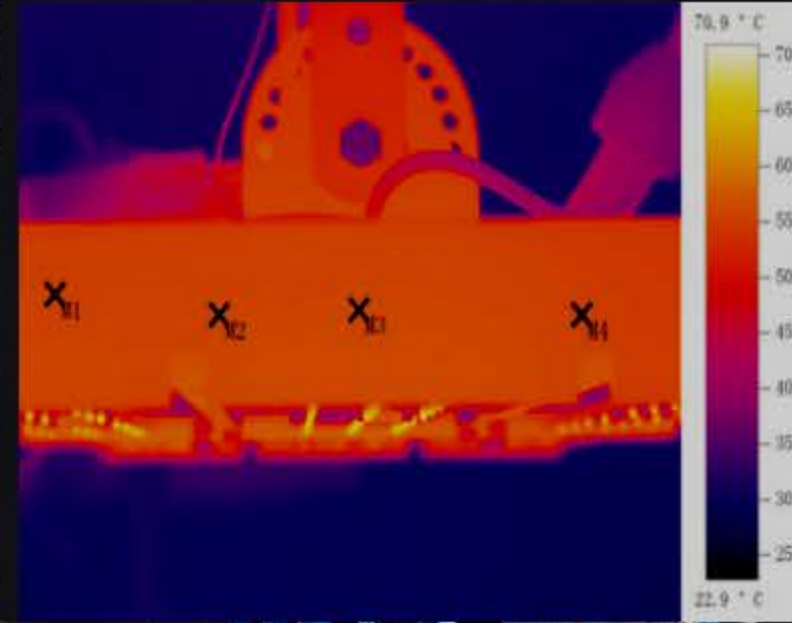
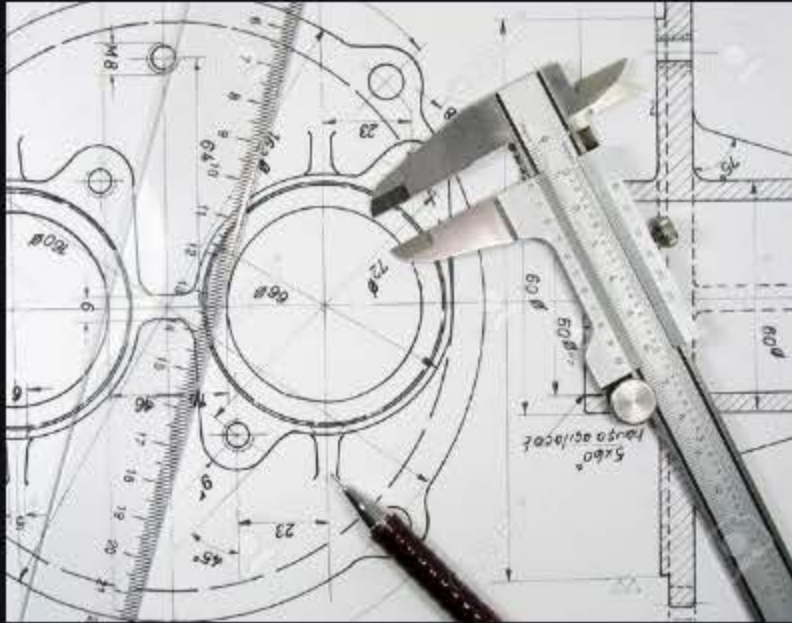


SECURITY SOLUTION

Wallpacks, flood lights



ODM, OEM



Our manufacturing team offers a wide spectrum of services, including supply management, product development and enhancement, customer services, package and test development, and quality and reliability issues etc.

PARTNER

CREE 

LED CHIPS

SOSEN
LED DRIVER



Bringing Efficiency to Light™



PHILIPS



Valued Quality. Delivered.

CREE / PHILIPS

MEANWELL / SOSEN
INVENTRONICS

DESIGNLIGHTS CONSORTIUM (DLC),
INTERTEK

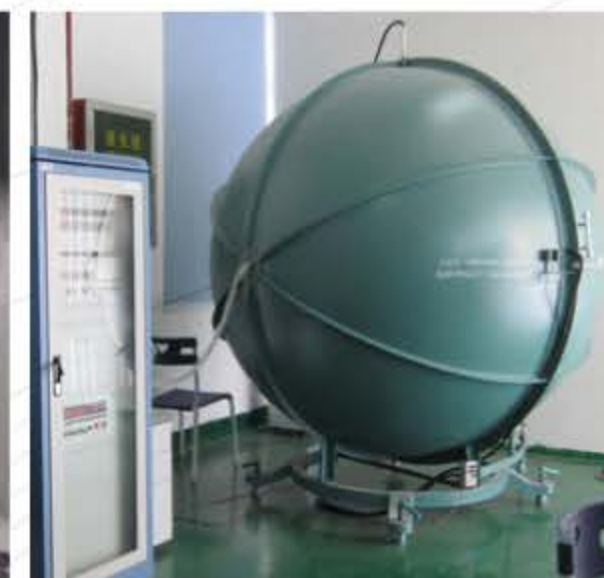
FACILITY



SAFETY STANDARD TEST



DISTRIBUTION PHOTOMETER



INTEGRATING SPHERE



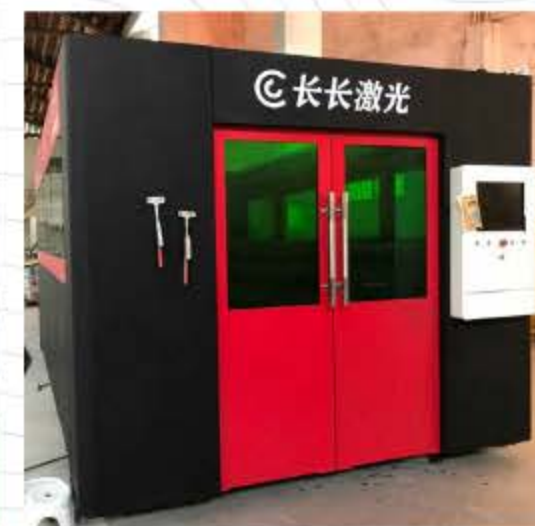
PRODUCTION



SMT



WELDER



LASER CUTTING



STAMPING



DIE-CASTING

CERTIFICATE



LT-PTB50-50W

DLC

Manufacturer: Lightide (HK) Industrial Co., Limited
 Lightide
 Technical Requirements Version: 4.2
 Qualified: 06/12/2017
 Product ID: P7DUDY4V

Classification: Standard
 Is Parent Product: No
 DLC Family Code: WWWBPH
 Dimming Status: Dimmable
 Listing Status: Listed

Output: 5100 lm
 Power: 47 W
 Efficiency: 108 lm/W
 Power Factor: 0.9
 Temperature: 5000 K
 Flicker: 0
 Total Harmonic Distortion: 0.2 %

LT-SGSAL-90W-40K

Manufacturer: Lightide (HK) Industrial Co., Limited
 Lightide
 Technical Requirements Version: 4.2
 Qualified: 06/12/2017
 Product ID: P7DUDY4V

Classification: Premium
 Is Parent Product: No
 DLC Family Code: WWWBPE
 Dimming Status: Dimmable
 Listing Status: Listed

Output: 9900 lm
 Power: 88 W
 Efficiency: 112 lm/W
 Power Factor: 0.9
 Temperature: 4000 K
 Flicker: 0
 Total Harmonic Distortion: 0.2 %

LT-WP01-90W-50K

Manufacturer: Lightide (HK) Industrial Co., Limited
 Lightide
 Technical Requirements Version: 4.2
 Qualified: 06/12/2017
 Product ID: PF3BTQSW

Classification: Standard
 Is Parent Product: No
 DLC Family Code: WWWBPD
 Dimming Status: Dimmable
 Listing Status: Listed

Output: 10400 lm
 Power: 89 W
 Efficiency: 117 lm/W
 Power Factor: 0.94
 Temperature: 5000 K
 Flicker: 0
 Total Harmonic Distortion: 0.18 %

CONTACT US

SHENZHEN ADDRESS

A BLK, Liang Xiang Industrial Zone, Long Hua
District, Shenzhen, China, 518110

EMAIL ADDRESS

sales@lightideled.com

PHONE NUMBER

(86) 755 8383 7000

WEBSITE

www.lightideled.com



Lightide Manufactory Co., Ltd
Lightide HK Industrial Co., Limited



Thank you!

[Contact us for inquiries or comments.](#)