



## 2024 CATALOG



**LIGHTIDE**

- +86-755-83837000
- sales@lightideled.com
- <https://www.lightideled.com>
- A BLK, Liang Xiang Industrial Zone, Langhua, Shenzhen, China

COMMERCIAL & EMERGENCY LED

Lightide Manufactory Co., Ltd.

深圳莱泰德科技有限公司



**LIGHTIDE**



## ▪ Contents

<b>About Us</b>	<b>02</b>
<b>LED Garage Canopy</b>	<b>12</b>
<b>LED Industrial Lights</b>	<b>26</b>
<b>LED Area &amp; Site</b>	<b>36</b>

## ▪ About us

Headquartered in Hongkong, Lightide Industrial is a market-leading innovator, especially specializes in indoor LED lighting and marine lighting.

With the development of advanced led lighting technology, Lightide Manufactory Co., Ltd. was set up in Shenzhen in 2009. By now, we have focused on the lighting industry for 20 years. And we have become one of the professional commercial & emergency LED lighting manufacturers & suppliers in China.

Lightide is a 100% Hongkong privately owned and managed company. We also employ over 200 persons with design, manufacturing, engineering, and sales. Our core strengths lie in quality manufacturing, retrofit and replacement for the projects. Besides, we have extensive business support capabilities at specifications, contractors, and end-users. Which allows us to create demand for our products as well as to support our distributor network.

For more information, please visit [www.lightideled.com](http://www.lightideled.com).



Flexible  
Solution



Customization  
Products & Service



Long-term  
Warranty



# Company History

Lightide, dedicated to deliver lighting value to our customers, is set up in 1999 and has become a world professional innovator in designing, manufacturing, and sales commercial and emergency LED lighting luminaires.



1999.09  
Hongkong  
Headquarter Set Up

1999



2009.06  
Shenzhen Factory Built.

2009



2019.12  
FS branch set up

2019



## ▪ Product service

20+

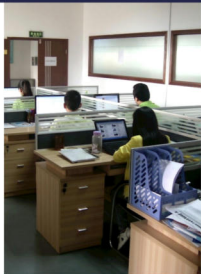
Yrs

20+

Engineers

19

Countries



### Flexible Solution

Your satisfaction is our top priority.

Provide you peace of mind by providing you with customized LED fixtures and flex solutions. Our team offers flexible services, such as product development, custom-made services, package design, solving quality and reliability issues, etc.

### Customization

Lightide offers a wide range of product customization features. And we can design and create any modifications as per your request.

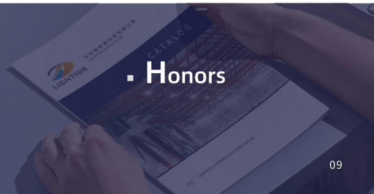


### Strict Inspection

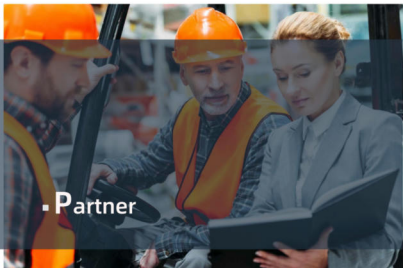
In order to ensure non-defective products are exported to the customers, we own a professional team that conducts strict inspections and manufacture according to American UL standards and European IEC standards.



Undergo rigorous quality and safety testing, Lightide's products ensure all appropriate certifications, such as cULus/cETLus, CE, and DLC. In other words, what you received are the best products on the market at all times.



• Honors



Partner

## Corporate With High-Class Companies

We are fortunate to have strong & trusted partners who help us provide exceptional products and services to our customers.



## Feedback



"I truly appreciate the years of support from you and your company. Great service and great products."



"Our customer is pleased with these led highbays battery backup, and has not had to replace any of them since installing them. Overall, we are very satisfied with the product."



"Really like these fixtures. Not only did they're installed go well. In conclusion, they made me really appreciate how great the canopy fixture really is."



"Super bright great illumination better than 2 fixtures lit up a 50-foot carport at 12 feet high. So, really nice fixture with several mounting options."



# LED Garage Canopy

# LED CANOPY LIGHT



## Garage Lighting Solution

Looking for ways to reduce the cost of your LED canopy lighting? DLC Premium LED outdoor canopy lights feature vandal-proof and shatter-proof housing for the best indoor and outdoor ceiling lighting.



Vandal Resistance



High Efficacy  
125 LPW



Junction Box  
Installation



Emergency  
Backup Available



IP65 Rating  
Waterproof

## FEATURE

Style	Vandal Proof
Housing	Aluminum Alloy
Diffuser	Shatter-proof PC
Waterproof	IP65
Lumen Efficacy	125 LPW
Color Temperature	3000K, 4000K, 5000K, 5700K
Protocol	Available
Emergency Backup Available	UL924, CEC Title 20
Listed	DLC Premium, ETL/CETL, DL, RoHS
Warranty	5 Years

## SPECIFICATION

Model	Input Voltage	Wattage	Light Efficacy	Beam Angle	Dimension	Eqv.
LT-955AL-40W	100-277VAC	40W	125 LPW	120	242x242x85 mm	75-100W MH
		60W				2H+ 120 minutes
LT-955AL-60W	100-277VAC	60W	125 LPW	120	242x242x85 mm	100-150W MH
		90W				3H+ 180 minutes
LT-955AL-90W	100-277VAC	90W	125 LPW	120	318x318x85 mm	250-400W MH
		120W				
LT-955AL-120W	100-277VAC	120W	125 LPW	120	318x318x85 mm	400-600W MH



Surface/Conduit  
Mount Options



Junction Box  
Mount Options



Optional  
Emergency  
Battery

## CERTIFICATE



## ORDER INFO.

Com.	Series	Power	Input Voltage	CCT	Control	Duration (EM)
LT	955AL	40W	Std.=100-277vac	27K-2700K	DM=1-100C Dim	Std.= 90 minutes
		60W	HV= 200-480VAC	30K-3000K	DA= Dalí Dim	2H+ 120 minutes
		90W		40K-4000K	PC=PhotoCell	3H+ 180 minutes
		120W		50K-5000K	MS=Motion Sensor	
				57K-5700K	EM=Emergency Kit	

# LED CANOPY LIGHT



## Canopy Lighting Solution

Professional garages may need higher lumen output and more fixtures. Our selection of affordable LED canopy lighting is the perfect solution.



Vandal Resistance



High Efficacy  
150 LPW



Surface Mount  
Installation



Impact Rated  
IK10



IP65 Rating  
Waterproof

## FEATURE

Style	Vandal Proof
Housing	Aluminum Alloy
Diffuser	Shatter proof PC
Waterproof	IP65
Lumen Efficacy	132-150 LPW
Color Temperature	3000K, 4000K, 5000K, 5700K
Photocell	Available
Impact Rated	IK10
Listed	ULC Premium, ETL/cETL, CE, RoHS
Warranty	5 Years

## SPECIFICATION

Model#	Input Voltage	Wattage	Beam Angle	Eqv.	Light Output	Dimension
LT-905AH-100W	100-277VAC	100W	100	250-400W MH	15,000 lumens	380x380x76 mm
LT-905AH-120W	100-277VAC	120W	100	400-600W MH	17,400 lumens	380x380x76 mm
LT-905AH-150W	100-277VAC	150W	100	400-600W MH	19,800 lumens	380x380x76 mm



Glassless  
Design

Conduit  
Mount

Excellent  
Heat Sink  
System

## CERTIFICATE



## ORDER INFO.

Com.	Series	Power	Input Voltage	CCT	Control
LT	SGSAH	100W	Std.=100-277vac	27K=2700K	DM=1-100C Dim
		120W	HV= 200-480VAC	30K=3000K	DA= Dalli Dim
		150W		40K=4000K	PC=Photocell
				50K=5000K	MS=Motion Sensor
				57K=5700K	

# LED CANOPY LIGHT



## Canopy Lighting Solution

Ceiling light canopy led not only features a vandal-proof and super slim profile but also is equivalent to 1000W MH for parking facilities, walkways, and gas stations.



Vandal Resistance



High Efficacy  
130 LPW



Surface Mount  
Installation



Impact Rated  
IK10



IP65 Rating  
Waterproof

## FEATURE

Style	Vandal Proof
Housing	Aluminum Alloy
Diffuser	Shatter proof glass
Waterproof	IP65
Lumen Efficacy	130-150 LPW
Color Temperature	3000K, 4000K, 5000K, 5700K
Photocell, Emergency Backup	Available
Impact Rated	IK10
Listed	ETL/cETL, CE, RoHS
Warranty	5 Years

## SPECIFICATION

Model#	Input Voltage	Wattage	Beam Angle	Eqv.	Light Output	Dimension
LT-605C-100W	100-277VAC	100W	105	250-400W MH	13,000 lumens	420x420x67 mm
LT-605C-150W	100-277VAC	150W	105	400-600W MH	18,500 lumens	420x420x67 mm
LT-605C-200W	100-277VAC	200W	105	400-600W MH	25,000 lumens	545x545x67 mm



## CERTIFICATE



Glareless  
Design



Conduit  
Mount



Excellent  
Heat Sink  
System

## ORDER INFO.

Com.	Series	Power	Input Voltage	CCT	Control	Duration (EM)
LT	SGSC	100W	Std.=100-277vac	27K=2700K	DM=1-10DC Dim	Std. = 90 minutes
		150W	HV= 200-480VAC	30K=3000K	DA= Dali Dim	2H= 120 minutes
		200W		40K=4000K	PC=Photocell	3H= 180 minutes
				50K=5000K	MS=Motion Sensor	
				57K=5700K	EM=Emergency Kit	

# RECESSED MOUNT CANOPY LIGHT

## Gas Station Lighting Solution

LED Recessed ceiling canopy lights are designed for outdoor use in a variety of commercial and professional settings, such as bus depots, gas stations, and more.



Vandal Resistance



High Efficacy  
150 LPW



Surface Mount  
Installation



Impact Rated  
IK10



IP65 Rating  
Waterproof



## FEATURE

Style	Recessed Mount
Housing	Aluminum + steel
Diffuser	Shatter-proof lens
Waterproof	IP65
Lumen Efficacy	150 LPW
Color Temperature	3000K, 4000K, 5000K, 5700K
Photocell	Available
Emergency Backup	UL924, CEC Title 20
Listed	ETL/cETL, CE, RoHS
Warranty	5 Years

## SPECIFICATION

Model#	Input Voltage	Power	Light Efficacy	Beam Angle	Dimension	Equip.
LT-RCFA-60W	100-277VAC	60W	130 LPW	60, 90	350x280x15mm	150W MH
LT-RCFA-100W	100-277VAC	100W	130 LPW	60, 90	350x280x15mm	250W MH
LT-RCFA-150W	100-277VAC	150W	130 LPW	60, 90	350x360x15mm	400W MH
LT-RCFA-180W	100-277VAC	180W	130 LPW	60, 90	350x452x15mm	600W MH

## CERTIFICATE



## ORDER INFO.

Com.	Series	Power	Input Voltage	CCT	Control	Duration (EM)
LT	RCFA	60W	Std.=100-277vac	27K=2700K	DM=1-10DC Dim	Std. = 90 minutes
		100W	HV= 200-480VAC	30K=3000K	DA= Dalí Dim	2H= 120 minutes
		150W		40K=4000K	PC=Photocell	3H= 180 minutes
		180W		50K=5000K	MS=Motion Sensor	
				57K=5700K	EM=Emergency Kit	

Meanwell Driver

Module Design

Optional EM Battery

# LED VAPOR TIGHT



## Garage Lighting Solution

Linear LED vapor tight light fixtures can be built with wattage & CCT selectable switch to reduce stocking inventory. And this led fixture is powerful lighting in harsh environments, protecting the light source from dust and moisture.



Shatter-proof  
Housing



High Efficacy  
150 LPW



CCT & Wattage  
Selectable



Impact Rated  
IK08



IP65 Rating  
Waterproof

## FEATURE

Style	Vapor Tight
Housing	DVA Rotted ABS
Diffuser	VG Rotted PC, Shatter-Proof
Waterproof	IP65
Lumen Efficacy	150 LPW (Clear), 140 LPW (Frosted)
Input Power & CCT	Selectable
Sensor	Microwave motion/photocell
Warranty	5 Years
Beam Angle	100 deg.
Emergency Backup	UL904, DEC Title-20
Listed	DLC, ETL/VELT, CE, RoHS

## SPECIFICATION

Model#	Input Voltage	Wattage	Lumen Efficacy	CCT	DR	Length
LT-1PA220	100-277VAC	Selectable 18W-23W-25W	150 LPW	Selectable 30K-40K-50K, Can be a single CCT	80	2'
LT-1PA436	100-277VAC	Selectable 20W-30W-40W	150 LPW		80	4'
LT-1PA443	100-277VAC	Selectable 32W-40W-50W	150 LPW		80	4"
LT-1PA880	100-277VAC	Selectable 60W-70W-80W	150 LPW		80	8'
LT-1PA810	100-277VAC	Selectable 80W-90W-100W	130 LPW		80	8'



CCT &  
Wattage  
Selectable

Motion  
Sensor  
Available

Intelligent  
Battery  
Option

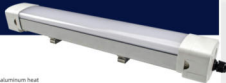
## CERTIFICATE



## ORDER INFO.

Com.	Series	Size	Power Code	CCT	Input Voltage	Control	Duration (EM)	Diffuser
LT	TPA	2	20	27K-2700K	Std.-100-277VAC	DM-1-100C Dim	Std.-90 minutes	Blank-Frosted
		4	36	30K-3000K	MV-200-480VAC	DA- Dali Dim	2H-120 minutes	C-Clear
			40	40K-4000K	MV-120-347VAC	EM-Emergency Kit	3H-180 minutes	
				50K-5000K		PC-Photocell		
		8	80	57K-5700K		MS-Motion Sensor		
				CPT>Selectable 30K-40K-50K				

# LED SHOP LIGHT



## Linkable LED Lighting

Linkable led shop lights feature shatterproof housing with aluminum heat sink to replace traditional fluorescent fixtures, typically used in garages, shops, workshops, etc.



Quick Wiring  
Connection



High Efficacy  
140 LPW



CCT & Wattage  
Selectable



Impact Rated  
IK08



IP65 Rating  
Waterproof

## FEATURE

Style	Bi-proof
Housing	Pure aluminum
Diffuser	PC, Shatter-Proof, Frosty/Clear Strip
Waterproof	IP65
Lumen Efficacy	100 LPW (Frosty)-140 LPW (Clear)
Sensor	Microwave motion/photocell
Beam Angle	120 deg.
Installation	Quick Connector
Emergency Backup Available	US924, CSC Title-20
Warranty	5 Years
Listed	ETL/cETL, CE, RoHS

## SPECIFICATION

Model#	Input Voltage	Power	Light Efficacy	CCT	Beam Angle	CR	Length
LT-TPL220	100-277VAC	20W	140 LPW/160 LPW	2700K-6500K	120	90	2'
LT-TPL440	100-277VAC	40W	140 LPW/160 LPW	2700K-6500K	120	90	4'
LT-TPL450	100-277VAC	50W	140 LPW/160 LPW	2700K-6500K	120	90	4'
LT-TPL560	100-277VAC	60W	140 LPW/160 LPW	2700K-6500K	120	90	5'

## CERTIFICATE



## Quick Wiring Linkable Connection

The linkable installation can save additional labor costs to reduce your electricity bill.



## Battery Option Intelligent Detection

Provide backup lighting to get people out of your building in an emergency.



## Shatter-proof Cover Option

There are clear strip and frosty covers for your choice.

## ORDER INFO.

Com.	Series	Size	Power	Input Voltage	CCT	Control	Duration (EM)	Cover
LT	TPL	2	20-20W	50k-100-277vac/276-2700K		EM-1-100C Dim	50k-90 min.	F=Frosty
		4	40-40W	50k-200-480VAC/30k-3000K		EM-Dial Dim	20k-120 min.	C=Clear
			50-50W	EV-200-240VAC/40k-4000K		EM-Emergency KR	30k-180 min.	
		5	60-60W		50k-5000K	PC-Photocell		
					57k-5700K	MS-Motion Sensor		

A photograph of a large industrial warehouse interior. The ceiling is a complex network of dark metal trusses and beams, with several bright, circular LED lights hanging from it. The floor is a light-colored concrete. In the background, there are rows of white metal shelving units or racks. The overall lighting is a mix of the bright overhead lights and a cooler, blue-toned light that appears to be coming from the left side of the frame.

# LED Industrial Light

# LED HIGH BAY BATTERY BACKUP



## Factory Assembly

UFO LED High Bay Lights are equipped with an emergency battery backup. This way they can provide both commercial lighting for illumination and backup lighting for emergencies.



Factory Assembly



High Efficacy  
160 LPW



UL924 & CEC Title-20 Compliant



NPFA 101 Compliant



IP65 Rating  
Waterproof

## FEATURE

Style	Factory Assembly Emergency Battery
Housing	Aluminum Alloy
Diffuser	Shatter-proof Glass/PC
Waterproof	IP65
Lumen Efficacy	160 LPW
Color Temperature	3000K, 4000K, 5000K, 5700K
Sensor	Microwave motion/photocell
Emergency Backup	UL924, CEC Title-20
Listed	ETL/VELT, CE, RoHS
Warranty	5 Years
Beam Angle	90/90/120 deg.

## SPECIFICATION

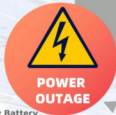
Model#	Input Voltage	Wattage	Light Efficacy	Battery	DR	Eqn.
LT-UBA280-100W-EM	100-277VAC	100W	150 LPW	90-180 min.	80	250-400W MH
LT-UBA280-150W-EM	100-277VAC	150W	150 LPW	90-180 min.	80	400-600W MH
LT-UBA300-200W-EM	100-277VAC	200W	150 LPW	90-180 min.	80	600-1000W MH
LT-UBA300-240W-EM	100-277VAC	240W	150 LPW	90-180 min.	80	1000W MH
LT-UBA300-300W-EM	100-277VAC	300W	150 LPW	90-180 min.	80	1000W MH

## CERTIFICATE



## Quick Installation Factory Assembly

No need for on-site (or field) assembly. This way you may avoid assembly failure in the field and reduce additional labor costs.



## Emergency Battery Intelligent Detection

provide backup lighting to get people out of your building in an emergency.



## 2IN1 Test Switch

Std. push-button for checking if it can work in emergency mode.

## ORDER INFO.

Com.	Series	Size	Power	Input Voltage	CCT	Control	Duration
LT	UBA	280	100W	Std.=100-277vac	27K-2700K	EM=Emergency Kit (Factory Assem.)	Std.= 90 minutes
			320	150W	MV= 120-347VAC	DM= 0-10VDC Dim	2H= 120 minutes
			400	200W	40K=4000K	PS=Photocell	3H= 180 minutes
			240W		50K=5000K	MS=Motion Sensor	
			300W		57K=5700K	EMH= Emergency Kit (Field Assem.)	

# ROUND LED HIGH BAY

## Smaller Size

UFO LED high bay lamp features a smaller size and is more efficient than the traditional high bay lights. Moreover, IP66 rated high bay lights can deliver efficient, uniform, high lumen output for commercial, industrial, retail, plant, etc.



Smaller Size



High Efficacy  
140 LPW



Emergency  
Backup Option



Excellent Heat Sink  
System



IP66 Rating  
Waterproof

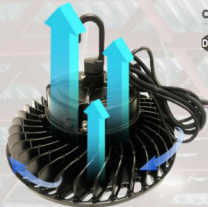
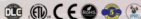
## FEATURE

Style	Smaller Size
Housing	Aluminum Alloy
Diffuser	Shatter-proof PC
Waterproof	IP66
Lumen Efficacy	140 LPW
Color Temperature	3000K, 4000K, 5000K, 5700K
Sensor	Microove motion/photocell
Emergency Backup Available	Field Assembly, Factory Assembly
Listed	DLC, ETL, IES, CE, RoHS
Warranty	5 Years
Beam Angle	120 deg.

## SPECIFICATION

Model#	Input Voltage	Power	Light Efficacy	Beam Angle	Dimension	Eqv.
LT-SBC-100W	100-277VAC	100W	140 LPW	120	Φ240x140mm	400W MH
LT-SBC-150W	100-277VAC	150W	140 LPW	120	Φ240x140mm	600W MH
LT-SBC-200W	100-277VAC	200W	140 LPW	120	Φ280x140mm	1000W MH
LT-SBC-250W	100-277VAC	250W	140 LPW	120	Φ280x140mm	1000W MH

## CERTIFICATE



## Excellent Heat Sink System Design

Only 10 inches (280mm) in diameter, the heat sink dissipation design is considering the analysis of thermodynamic cycle. The new design is more compact without sacrificing performance.

## Optional Emergency Backup

Assembled an UL924 & CE certified battery in the field, they can guide people out of the building in time under power outages, blackouts, fires, and lightning strikes, etc.



Field Assembly  
(EMA)



Factory Assembly  
(EM)

## ORDER INFO.

Com.	Series	Power	Input Voltage	CCT	Control	Duration (EM)
LT	SBC	100W	Std.=100-277vac	27K~2700K	DM-1-100C Dim	Std.=90minutes
		150W	HV=200-480VAC	30K~3000K	DA= Ball Dim	2H= 120 minutes
	200W	40K~4000K	PS=Photocell	3H= 180 minutes		
		50K~5000K	MS=Motion Sensor			
		57K~5700K	EM=Emergency Kit			
			EMA=Emergency Kit			

# ROUND LED HIGH BAY

## Motion Sensor

UFO led high bay lights feature IP66 rated and used across various environments, including industrial facilities, manufacturing plants, big box retail centers, and even school swimming pools.



Motion Sensor



High Efficacy  
160 LPW



Emergency  
Backup Option



Excellent Heat Sink  
System



IP66 Rating  
Waterproof

## FEATURE

Style	Motion Sensor
Housing	Aluminum Alloy
Diffuser	Shutter-proof PC
Waterproof	IP66
Lumen Efficacy	160 LPW
Color Temperature	3000K, 4000K, 5000K, 5700K
Sensor	Microwave motion/phtocell
Emergency Backup Available	Field Assembly
Listed	ETL/UL/CE, RoHS
Warranty	5 Years
Beam Angle	60/90/120 deg.

## SPECIFICATION

Model#	Input Voltage	Power	Light Efficacy	Motion Sensor	Dimension	Eqiv.
LT-SBA100W	100-277VAC	100W	160 LPW	Available	Φ253x165 mm	400W MH
LT-SBA150W	100-277VAC	150W	160 LPW	Available	Φ308x176 mm	600W MH
LT-SBA200W	100-277VAC	200W	160 LPW	Available	Φ354x179 mm	1000W MH
LT-SBA240W	100-277VAC	240W	160 LPW	Available	Φ405x179 mm	1000W MH
LT-SBA300W	100-277VAC	300W	160 LPW	Available	Φ405x179 mm	1000W MH

## Excellent Heat Sink System Design

The heat sink dissipation design is considering the analysis of thermodynamic cycle. The new design is more compact without sacrificing performance.



## Optional Emergency Backup

Assembled an UL924 & CE certified battery in the field, they can guide people out of the building in time under power outages, blackouts, fires, and lightning strikes, etc.



Factory Assembly  
(EM)

Field Assembly  
(EMH)

## CERTIFICATE



## ORDER INFO.

Com.	Series	Power	Input Voltage	CCT	Control	Duration (EM)
LT	SBA	100W	50s-100-277vac	27K-2700K	DM-1-100C Dim	50s-90minutes
		150W	HV-200-480VAC	30K-3000K	DA- Ball Dim	2H-120 minutes
	200W	40K-4000K		PS-PhotoCell	3H-180 minutes	
	240W	50K-5000K		MS-Motion Sensor		
	300W	57K-5700K		EM-Emergency Kit		
					EMH-Emergency Kit	

# LINEAR SHOP LIGHT LED HIGH BAY

## Ultra Slim

Linear LED High Bay shop lights are a top-of-the-line lighting solution that boasts a slim profile and high efficacy of 140 LPW. These lights are perfect for industrial and commercial settings, providing bright and efficient lighting while maintaining a sleek and modern look.



Motion Sensor



High Efficacy  
140 LPW



Emergency  
Available



Various Mount



Glare Free

## FEATURE

Style	Linear Style
Lumen Efficacy	140 LPW
Housing	Aluminum
Diffuser	Shatter-proof PC
Wattage	100W-300W
Color Temperature	3000K, 4000K, 5000K, 5700K
Sensor	Microwave motion/photocell
Beam Angle	120 deg.
Emergency Backup	UL924, CEC Title 20
Listed	ULC ETL/cETL, CE, RoHS
Warranty	5 Years

## SPECIFICATION

Model	Input Voltage	Power	Light Efficacy	CCT	Eqm.	Dimension
LT-888-100W	100-277VAC	101W	140 LPW	30K, 40K, 50K, 57K	400W MH	630x280x47 mm
LT-888-150W	100-277VAC	149W	140 LPW	30K, 40K, 50K, 57K	400-600W MH	630x280x47 mm
LT-888-200W	100-277VAC	209W	140 LPW	30K, 40K, 50K, 57K	600-1000W MH	1210x404x47 mm
LT-888-240W	100-277VAC	228W	140 LPW	30K, 40K, 50K, 57K	1000W MH	1210x404x47 mm
LT-888-300W	100-277VAC	300W	140 LPW	30K, 40K, 50K, 57K	1000W MH	1210x404x47 mm

CERTIFICATE



## Ultra Slim 1.85"

Our shop light boasts a slim profile (1.85" max.), making them perfect for any space where you need bright, reliable lighting without taking up too much room. But don't let their small size fool you - these lights pack a powerful punch when it comes to efficacy. You'll be amazed at how much brighter your space looks with our LED high bay lights.

## Emergency Backup

And for added peace of mind, our linear LED shop lighting fixtures also come with emergency backup options. So even in the event of a power outage, you can rest assured that your shop or workspace will still be well-lit and safe.

## ORDER INFO.

Com.	Series	Power	Input Voltage	CCT	Control	Duration (EM)
LT	SBB	100W	Std.=100-277vac	27K-2700K	DM-1-100C Dim	Std.=90minutes
		150W	HV=200-480VAC	30K-3000K	DA= Dalí Dim	2H= 120 minutes
		200W		40K-4000K	PS=Photocell	3H= 180 minutes
		240W		50K-5000K	MS=Motion Sensor	
		300W		57K-5700K	EM=Emergency Kit	



# LED Area & Site

# ROUND LED POST TOP



## G3 LED Street Light

Outdoor LED Post Lights feature CCT & Wattage selectable and 140 LPW of light efficient to replace 400W metal halide area lights, and street lights that can be used for parks, pathways, sidewalks, streets, and yards.



Motion Sensor



High Efficacy  
140+ LPW



CCT & Wattage  
Selectable



Rugged Grade



IP65 Rated

## FEATURE

Style	Street Light
Housing	Die-casting Aluminum Alloy
Diffuser	PC, Shatter-Proof
CCT	30K-40K-50K Field Selectable
Waterproof	IP65
Lumen Efficacy	140 LPW
Sensor	Microwave motion/photocell
Beam Angle	Type V (345 deg.)
Installation	For 4-2 3/8" or 3"
Warranty	5 Years
Listed	DLC, ETL/NETL, CE, RoHS

## SPECIFICATION

Model#	Input Voltage	Power	CCT	Equip.	Dimension
LT-PTA50	100-277VAC	30W-50W-60W Selectable	30K-40K-50K Selectable, Single CCT	250W MH	Ø42"x432mm
LT-PTA100	100-277VAC	60W-80W-100W Selectable	30K-40K-50K Selectable, Single CCT	400W MH	Ø42"x432mm
LT-PTA150	100-277VAC	100W-105W-150W Selectable	30K-40K-50K Selectable, Single CCT	400W MH	Ø42"x432mm

## Folded Design



Adjustable mount bracket allows for angling the beam up or down in 180 degrees to light up where you want, more neighbor-friendly.

## CERTIFICATE



## CCT & Wattage Selectable

There are allowed 3 different wattage and color temperature settings with simple slide switches, such as 30W-40W-50W and 3000K-4000K-5000K.

## Motion Sensor

Turn on the led light fixtures, when motion is detected to save more energy cost.

## ORDER INFO.

Com.	Series	Power	Input Voltage	CCT	Control
LT	PTA	50	Std.=100-277vac HV=200-480VAC EV=200-240VAC	Blank-Selectable 30K-40K-50K 30K-3000K 40K-4000K 50K-5000K 57K-5700K	DM-1-1SDC Dim PS=Photocell MS=Motion Sensor

# COLONIAL LED POST TOP



## G3 LED Street Light

LED post top lights are DLC qualified outdoor street lighting fixtures with power & CCT selectable for inventory saving by 80%. The variety of light distribution Type III, IV, and V are now optional. These LED Post Top Light Fixtures are designed for parking lots and street lighting.



Motion Sensor



High Efficacy  
120 LPW



CCT & Wattage  
Selectable



Rugged Grade



IP65 Rated

## FEATURE

Style	Street Light
Housing	One piece die casting aluminum frame
Diffuser	PC or Glass, Shatter-Proof, Clear or Frosty
CCT	30K-40K-50K Field Selectable
Waterproof	IP65
Lumen Efficacy	120 LPW (Frosty), 140 LPW (Clear)
Sensor	Microwave motion/photocell
Beam Angle	Type III, IV, V
Installation	For 42 3/8" or 3"
Warranty	5 Years
Listed	DLC, ETL/ETL, CE, RoHS

## SPECIFICATION

Model#	Input Voltage	Wattage	CCT	Dimension	Equip.
LT-PT830	100-277VAC	30W		350x350x430 mm	75W MH
LT-PT950	100-277VAC	50W		350x350x430 mm	150W MH
LT-PT860	100-277VAC	Selectable 30W-50W-60W	Single CCT, DR 30K-40K-50K Selectable	350x350x430 mm	250W MH
LT-PT8100	100-277VAC	Selectable 30W-60W-100W		350x350x430 mm	250W MH
LT-PT8100CPT	100-277VAC	Selectable 80W-100W-120W		350x350x430 mm	400W MH
LT-PT8120	100-277VAC	120W	Single CCT	350x350x430 mm	250W MH

## CERTIFICATE



### Dusk-Dawn

Turn on the LED light fixtures at dusk and off at dawn to save more energy costs.



### CCT & Wattage Selectable

There are allowed 3 different wattage and color temperature settings with simple slide switches, such as 30W-40W-50W and 300K-400K-500K.



### Motion Sensor

Turn on the led light fixtures when motion is detected to save more energy cost.

## ORDER INFO.

Com.	Series	Power	Input Voltage	CCT	Control	Beam Angle	Cover
LT	PTB	30-30W	Std.=100-277vac	27K-2700K	DM+1-100C Dim	Blank=Type V	Blank=Frosty
		50-50W	HV= 200-480VAC	30K-3000K		T3= Type III	CR=Clear
		60-Selectable 30W-50W-60W		40K-4000K	PS=Photocell	F4= Type IV	
		100-Selectable 30W-60W-100W		50K-5000K	MS=Motion Sensor		
		120CPT=Selectable 80W-100W-120W		57K-5700K			
		120W		T=Selectable 30K-40K-50K			

# LED STADIUM LIGHT



## High Mast LED Flood Light

Lighting football fields and stadiums is an experience that continues to get better with time. We carry both LED stadium flood light and spot lights that are great for indoor and outdoor sports arenas and stadiums.



Top Standard Material



High Efficacy  
140 LPW



Surge Protection  
10KV/20KV



Durable & Well Built



IP66 Rated  
Waterproof

## FEATURE

Style	High Mast LED Flood Light
Housing	Aluminum Alloy, High Duty Die-casting
Diffuser	PC, Shatter-proof
Waterproof	IP66
Surge Device	10KV / 20KV
Mount	Adjustable Bracket
Beam Angle	15/30/60 deg.
Listed	ETL/CEUL, CE, RoHS
Premium Chip	Cree /Philips Chip
Warranty	5 Years

## SPECIFICATION

Model#	Input Voltage	Wattage	Light Efficacy	Dimension	Weight
LT HPRF-300W	100-277VAC	300W	140 LPW	450X450X250 mm	13 Kg
LT HPRF-400W	100-277VAC	400W	140 LPW	630X630X260 mm	18 Kg
LT HPRF-500W	100-277VAC	500W	140 LPW	830X830X260 mm	18 Kg
LT HPRF-700W	100-277VAC	800W	140 LPW	700X840X270 mm	25.3 Kg
LT HPRF-1000W	100-277VAC	1000W	140 LPW	790X640X320 mm	32 Kg
LT HPRF-1200W	100-277VAC	1200W	140 LPW	790X640X320 mm	33 Kg

## Durable & Well Built

The die-casting aluminum alloy case with unique designed lens prevents the light safe from water leakage and amazing heat dissipation, sturdy and well-built, ensures 50,000hrs lifespan, make life easier without frequent bulb replacement.

## Premium Chips

With LM80 certified and high efficacy of 130-140 lumens / watt, it will provide you dependable flood lighting for many years to come.

## Adjustable Bracket

Adjustable mount bracket allows for angling the beam up or down in 180 degrees to light up where you want, more neighbor-friendly.

## CERTIFICATE



## ORDER INFO.

Com.	Series	Power	Input Voltage	CCT	Beam Angle
LT	HPRF	300W	Std.=100-277vac	27K~2700K	300= 30 deg.
		400W		30K~3000K	600=60 deg.
		500W		40K~4000K	150=15 deg.
		700W		50K~5000K	
		1000W		57K~5700K	
		1200W			

# LED STADIUM LIGHT



## High Mast LED Flood Light

High mast LED stadium lights are compatible with DMX protocol to replace traditional 1000-2000W MH or HPS light sources for flood lighting. They are an industry-leading, innovative, energy-saving luminaire.



Module Design



High Efficacy  
130 LPW



Surge Protection



Rugged Grade



IP67 Rated

## FEATURE

Style	High Mast LED Flood Light
Housing	Aluminum Alloy, High Duty Die-casting
Diffuser	PC, Shatter-proof
Waterproof	IP67
Surge Device	30KV / 20KV
Control Mode	DMX12 (RGBW) Available
Beam Angle	30°/30°/60°/90°/135° deg.
Listed	ETL/VEL, CE, RoHS
Premium Chip	Cree /Philips Chip
Warranty	5 Years

## SPECIFICATION

Model#	Input Voltage	Wattage	Light Efficacy	Dimension	Weight	Module Qty
LT-HPSF-400W	100-277VAC	400W	130-140 LPW	710x375x100 mm	25.5 Kg	4PCS
LT-HPSF-600W	100-277VAC	600W	130-140 LPW	743x530x116 mm	28.5 Kg	6PCS
LT-HPSF-800W	100-277VAC	800W	130-140 LPW	743x685x116 mm	34.5 Kg	8PCS
LT-HPSF-1000W	100-277VAC	1000W	130-140 LPW	743x840x116 mm	42.5 Kg	10PCS
LT-HPSF-1200W	100-277VAC	1200W	130-140 LPW	743x995x116 mm	46.5 Kg	12PCS

## CERTIFICATE

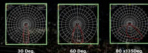


## Durable & Well Built

The die-casting aluminum alloy case with unique designed lens prevents the light safe from water leakage and amazing heat dissipation, sturdy and well-built, ensures 60,000hrs lifespan, make life easier without frequent bulb replacement.

## Premium Chips

With LM80 certified and high efficacy of 130-140 lumens/watt, it will provide you dependable flood lighting for many years to come.



## Adjustable Bracket

Adjustable mount bracket allows for angling the beam up or down to 180 degrees to light up where you want, more neighbor-friendly.

## ORDER INFO.

Com.	Series	Power	Input Voltage	CCT	Beam Angle
LT	HPSF	400W	Std.-100-277vac	27K-2700K	300°- 30 deg.
		600W		30K-3000K	600-60 deg.
		800W		40K-4000K	100°-10 deg.
		1000W		50K-5000K	AS1-85X135 deg.
		1200W		57K-5700K	

# BULKHEAD LED WALL LIGHTS



WRA Series

## Bulkhead

Outdoor LED wall lighting fixture is a bulkhead type of lighting fixture that is designed to be mounted on walls or ceilings. It is commonly used in outdoor spaces such as gardens, patios, porches, and driveways. The bulkhead design provides a sturdy and durable housing for the LED lights, making it ideal for outdoor use.



Slim Profile  
2 1/3"



High Efficacy  
140 LPW



CCT & Wattage  
Selectable



Dusk-Dawn  
Available



IP65 Rated  
Waterproof

## FEATURE

Type	Bulkhead
Housing	Aluminum Alloy, High Duty Die casting
Diffuser	PC, Shatter-proof
Waterproof	IP65
Light Efficacy	100 LPW
Field Selectable	Motion Sensor, PHOTOCELL
Beam Angle	120 deg.
Listed	ETL/IEC/UL, CE, RoHS
Mount	Flush
Warranty	5 Years

## SPECIFICATION

Model#	Input Voltage	Wattage	Light Efficacy	Dimension	Thd	Lifetime
LT-WRA-WRB 145	100-277VAC	5W, 12W	100 LPW	Ø1A, 145x60 mm	-20%	>50,000 hrs
LT-WRA-WRB 220	100-277VAC	10W, 15W	100 LPW	Ø1A, 220x65 mm	-20%	>50,000 hrs
LT-WRA-WRB 275	100-277VAC	18W, 20W	100 LPW	Ø1A, 275x65 mm	-20%	>50,000 hrs
LT-WRA-WRB 360	100-277VAC	30W,36W	100 LPW	Ø1A, 360x65mm	-20%	>50,000 hrs



## Motion Sensor

This sensor detects movement and automatically turns on the lights, providing an added layer of security to your property. Whether you want to deter potential intruders or simply light up your pathway for when you arrive home late at night, the motion sensor feature ensures that your outdoor space is always well-lit and safe.

WRB Series

## CERTIFICATE



## ORDER INFO.

Com.	Series	Size	Input Voltage	CCT	Control Mode	Finish
LT	WRA	145	Std.=100-277vac	27K-2700K	PC=Photocell	Blank= Black
	WRB	220		30K-3000K	MS=Motion Sensor	WH= White
		275		40K-4000K	EM= Emergency Kit	
		360		50K-5000K		
				57K-5700K		

# LED WALL PACK



## Half Cutoff Style

LED Wall Pack lights provide a high-efficient 140 LPW and CCT & Wattage selectable in the field for the perimeter and security lighting. In addition, DLC-qualified LED luminaires are able to accelerate the payback.



Std. 1-10vdc  
Dimming



High Efficacy  
140 LPW



CCT & Wattage  
Selectable



Emergency  
Backup Available



IP65 Rated  
Waterproof

## FEATURE

Style	Half Cutoff
Housing	Die-casting Aluminum Alloy
Diffuser	Impact-proof Glass 5mm thickness or PC
Waterproof	IP65
Lumen Efficacy	140 LPW
Wattage	Field Selectable
Color Temperature	Field Selectable
Motion Sensor	Optional
Photocell	Available
Emergency Backup Available	UL924, CEC Title 20
Listed	DLC, ETL/ETL, CE, RoHS
Warranty	5 Years

## SPECIFICATION

Model#	Input Voltage	Wattage	CCT	Beam Angle	Size	Eqv.
L7-WP01-40W	100-277VAC	40W	30K, 40K, 50K, 57K	120	365*230*195mm	75-100W MH
L7-WP01-60W	100-277VAC	36W-48W-60W Selectable	30K, 40K, 50K, 57K	120	365*230*195mm	75-250W MH
L7-WP01-90W	100-277VAC	90W	30K, 40K, 50K, 57K	120	365*230*195mm	250-400W MH
L7-WP01-100W	100-277VAC	72W-100W-120W Selectable	30K, 40K, 50K, 57K	120	365*230*195mm	400W MH

## CCT & Wattage Selectable

There are allowed 3 different wattage and color temperature settings with simple slide switches, such as 30W-48W-50W and 3000K-4000K-5000K.

## Dark Sky Compliant Light Shield

Offer a light shield to get more focused downward light as opposed to the more exposed and widespread illumination.

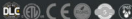
## Excellent Heat Sink Design

Accelerates heat dissipation on the LEDs to extend the lifespan.

## Emergency Backup Available

Outdoor LED Wall Mounted flood lights can provide an emergency solution to the perimeter and security lighting applications.

## CERTIFICATE



## ORDER INFO.

Com.	Series	Power	Input Voltage	CCT	Control	Refractor
LT	WP01	40W	Blank-100-277VAC	27K-2700K	DM-1-10DC Dim	Blank-Glass
		60W	HV-200-480VAC	30K-3000K	PC=Photocell	P=Polycarbonate
		90W	MV-120-347VAC	40K-4000K	MS=Motion Sensor	
		120W		50K-5000K	EM=Emergency Kit	
				57K-5700K		

# LED WALL PACK



## Full Cutoff Style

Outdoor Full Cutoff LED wall packs feature trapezoid style and dusk to dawn work mode. 120 LPW of LED wall pack can be 400W MH Equivalent. In addition, exterior led wall pack light fixtures can work great for pathway and building perimeter lighting.



Std. 1-10vdc  
Dimming



High Efficacy  
140 LPW



Dusk-Dawn  
Available



Emergency  
Backup Available



IP65 Rated  
Waterproof

## FEATURE

Style	Full Cutoff
Diffuser	Shatter-proof PC
Housing	Aluminum Alloy
Waterproof	IP65
Lumen Efficacy	140 LPW
Motion Sensor	Occupancy
Photocell	Available
Emergency Backup Available	UL924, CEC Title-20
Listed	ETL/VEL CE, RoHS
Warranty	5 Years

## SPECIFICATION

Model#	Input Voltage	Power	Light Efficacy	Beam Angle	Dimension	Eqv.
LT-WPCA-30W	100-277VAC	30W	140 LPW	T3	320x182x182 mm	75-100W MH
LT-WPCA-60W	100-277VAC	60W	140 LPW	T3	320x182x182 mm	175-250W MH
LT-WPCA-80W	100-277VAC	80W	140 LPW	T3	320x182x182 mm	250-400W MH

## Photocell Dusk-Dawn

Turn on the LED light fixture at dusk and off at dawn to save more energy costs.



## Emergency Backup Available

Outdoor LED Wall Mounted flood lights can provide an emergency solution to the perimeter and security lighting applications.

## Excellent Heat Sink Design

Accelerate heat dissipation on the LEDs to extend the lifespan.

## CERTIFICATE



## ORDER INFO.

Com.	Series	Power	Input Voltage	CCT	Control	Duration (EM)
LT	WPCA	30W	Std-100-277VAC	27K-2700K	DM-1-100C Dim	STD-90 min.
			HY-200-480VAC	30K-3000K	PC-Photocell	2H-120 min.
		80W	EV-200-240VAC	40K-4000K	MS-Motion Sensor	3H-180 min.
				50K-5000K	EM-Emergency Kit	
				50K-5000K		
				57K-5700K		